

HUSTLER
POWERBOATS



H

H U S T L E R

C h e e t a h

344



HUSTLER

Cheetah

344



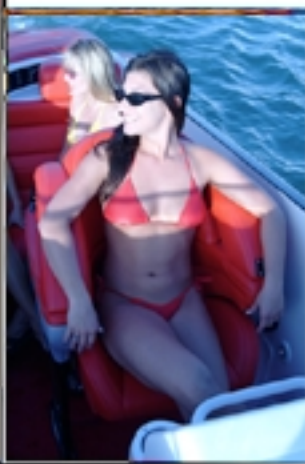
Speed, agility and stability in one design are what set Hustler's patented StepTek hull forms apart from the competition. Leading edge construction techniques combined with the finest materials available, allow the 344 to run in front when others are running for cover. Lines and shapes that please the eye, the finest craftsmanship and performance that can only be described as unreal ... the 344 is the ultimate predator in her class.

With secure stand-up bolsters and a helm station designed for the ultimate in functionality, managing the 344 Cheetah in any situation is a lesson in the benefits of superior ergonomics. Intelligently placed gauges and engine controls provide comfort and inspire confidence behind the wheel.

The cabin, allowing for comfortable weekending, is paid the same attention to detail that every Hustler is provided. Enclosed head, storage, galley, a spacious settee and berth are lined with gelcoat and durable easy to clean vinyl materials taking the cleaning headaches out of your boating experience.

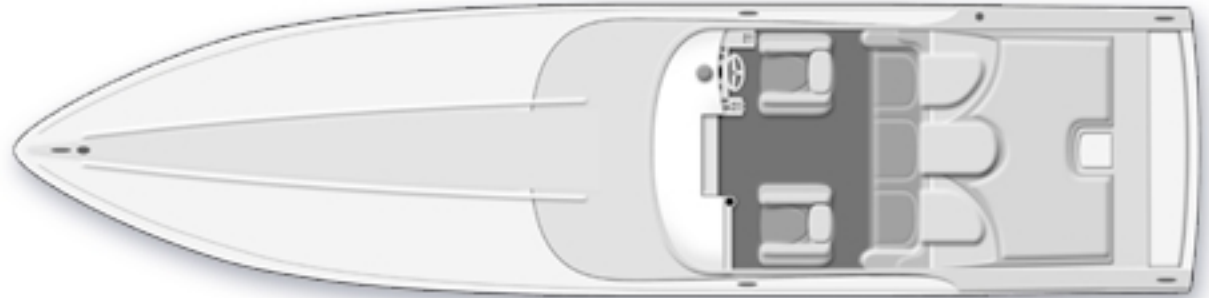
Pound for pound, horsepower for horsepower, Hustler







HUSTLER
Cheetah
344



S P E C I F I C A T I O N S

Length Overall	34' 4"
Beam	8' 6"
Cabin Height	4' 9"
Weight approx.	7,200 lbs
Sleeping Accommodation	2
Standard Power	Twin Mercruiser 496 Mag with Bravo 1
Cruising Speed	55 mph
Fuel Capacity	135 gals



GLOBAL MARINE POWER, INC.
4062-74 Grumman Blvd. - Calverton - NY 11933 - U.S.A.
Tel. (+1)-631-208-2933 - Fax: (+1)-631-208-2942
Web: www.hustlerpowerboats.com - E-mail: sales@hustlerpowerboats.com



Although all statements, descriptions and images are believed to be correct at time of publication, accuracy cannot be guaranteed. Some images may show optional features. Specifications and model availability are subject to change without notice.